



# launcherX

## Launcher X™ Users Manual

Version 1.2.x

**REFRESHER**  
SWITCH TO MANUAL REFRESH MODE FOR BLAZING SPEED AND WATCH THE REFRESHER BUTTON APPEAR.

**THE GAUGES**  
76% 6628K  
4.02V 82%

**CATEGORY ICONS**  
INSTANTLY FIND YOUR CATEGORY AT A GLANCE

**THE GADGET BAR**  
FEATURING TRIED AND TRUE DRAG-ME DROP-ME USABILITY

**GADGET TOGGLE**  
TOGGLE OFF THE GADGET BAR INTO AUTO POP-UP MODE TO MAXIMIZE YOUR CANVAS.

LOCK ME TRASH INFO TOOLS RENAME BEAM ME CARD TOOLS CONTRAST BACKLIGHT OFF BRIGHTNESS MAIL ME



## INDEX

---

- [Getting Started with Launcher X](#)
  - [Introduction](#)
  - [Requirements and Compatibility](#)
  - [Installation](#)
  - [Unlocking Launcher X](#)
- [Using Launcher X](#)
  - [Menu Navigation](#)
  - [Activating and Deactivating Launcher X](#)
  - [The Main Screen](#)
  - [Using Launcher X Basics](#)
  - [The Gadget Bar](#)
    - [The Gadgets](#)
  - [Customizing Launcher X](#)
    - [Default Settings](#)
    - [Categories](#)
    - [The Gadget Bar](#)
    - [Launcher X Preferences](#)
- [Advanced Features](#)
  - [The File Manager](#)
  - [Shortcut Stubs](#)
  - [Bundled Apps for better use of the Memory Card](#)
- [End User Support](#)
- [Legal Notices](#)
  - [Software Upgrade Policy](#)
  - [Refund Policy](#)
  - [Privacy Statement](#)
  - [Acceptable Use](#)
  - [End User License Agreement](#)



## Getting Started with Launcher X

---

### Introduction

Launcher X is a highly configurable application launcher that replaces the built-in launcher on your Palm Powered Handheld. It offers a number of enhancements including:

- Improved management and organization of your applications with simple drag-drop operations
- Quick access to common functions using the "Gadget" toolbar
- Easy management of applications on your memory card
- Built-in file explorer to rename/copy/delete files and folders on your memory card
- Configurable look and behavior with Active Skins™

### Requirements and Compatibility

#### OS and Memory Requirements

Launcher X works on any Palm Powered Handheld running OS version 3.5 or better. It requires 450 kb of free memory during installation, after installation it can be configured to run with a memory footprint as small as 250 kb.

**Warning:** Launcher X will NOT RUN on old Palm III devices upgraded to OS 3.5 or better since 16-level grayscale is not available on this device.

#### Graphics Support

Launcher X supports a diverse set of resolutions and colors.

Color Support:

- 16 grayscale
- 256 color
- 65536 color

Resolution support:

- 160x160
- 320x240 (HandEra)
- 320x320 (Sony OS 4.x and 3.5)
- 320x320 (OS 5.x)
- 320x480 (Sony OS 5)
- 320x480 with Virtual Graffiti / Landscape / Portrait modes

In practical terms, all commonly available devices past and present are supported including: all PalmOne/Palm branded handhelds, all Sony Clie series, all Handspring branded handhelds, Garmin iQue series, Tapwave Zodiac series, and HandEra 330 series.

#### Memory Card Support

Launcher X supports all types of expansion memory cards including SD, Memory Stick, and Handspring Springboard.



## Requirements and Compatibility, continued...

### Jog and 5-way Navigation support

Launcher X provides Jog Dial and 5-Way navigation hardware support for the following devices:

- All Palm/PalmOne series 5-way navigation
- Palm Treo series 5-way navigation
- All Sony Clie series Jog Dial
- Treo 90/180/270/300 series jog rocker
- Treo 600 series 5-way navigation
- HandEra 330 Jog Dial
- Garmin iQue series

## Installation

Launcher X is distributed in a Zip archive. Users of Windows XP should be able to open this file by double clicking it. If you cannot open this file you will need to install WinZip (for Windows users, [www.winzip.com](http://www.winzip.com)) or StuffIt (for Windows, Mac, and Linux users, [www.stuffit.com](http://www.stuffit.com)).

The Zip archive contains the following files:

UpgradeInfo.txt	Document regarding how to get replacement registration code for past customers
Launcher X.prc	Launcher X application
LauncherXManual.pdf	This document

Launcher X.prc should be installed onto your handheld by a HotSync operation.

When you start Launcher X for the first time after the installation, it will unpack and install components and skins needed for your device.

## Unlocking Launcher X

Launcher X requires you to enter an unlock code before it becomes fully functional, without this process after 15 days Launcher X will continually nag you for an unlock code.

1. To unlock Launcher X follow the following steps:
2. Tap the About Launcher X menu
3. Tap the Register section near to top right of this form.
4. Enter you unlock code that was supplied to you when you purchased Launcher X.

Once you've entered your unlock code, Launcher X will be fully activated.

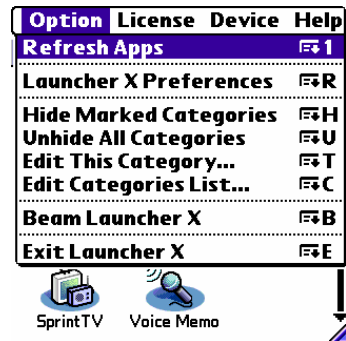


## Using Launcher X

---

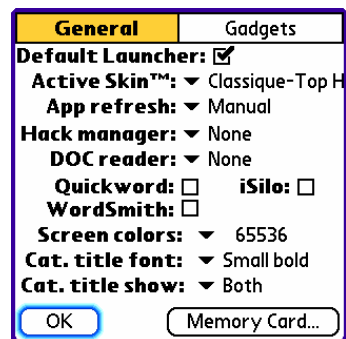
### Menu Navigation

Like all Palm OS applications many settings are accessed by way of the physical "Menu" button on your handheld. Below are some screenshots to guide you through the rest of this document



### Activating and Deactivating Launcher X

Launcher X activates when you tap the Launcher X icon in your standard launcher. Once activated Launcher X you must designate Launcher X as the default application launcher.



To designate Launcher X as the default launcher do the following:

1. Start Launcher X
2. Press the Menu button
3. Choose "Options" and then "Launcher X Preferences"
4. Check the box "Default Launcher"

From this point onwards whenever you tap the Home button on your handheld Launcher X will be started.

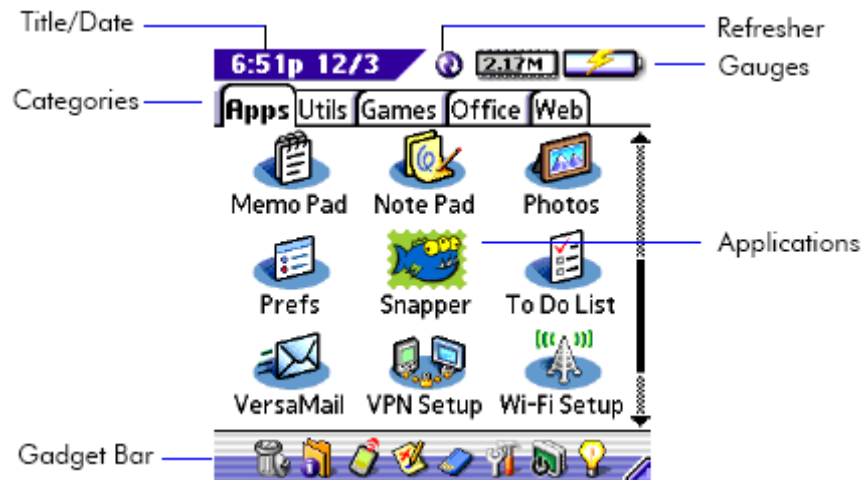
To deactivate Launcher X, uncheck the "Default Launcher" check box.

### The Main Screen



When you start Launcher X for the first time, it looks at all the skins available on the device and opens the one that best fits your handheld. There are 12 Active Skins™ supplied with Launcher X, depending on the skin you select the appearance of the main screen will differ. All skins have four main sections.

Skins allow you to choose not only the look and feel of Launcher X but also the layout of the tabs. Tabs can be arranged at the top, left or right hand sides.



### **Title/Date Information**

This area displays date and time information, you can tap on it to toggle between day of week.

### **The Gauges**

This area displays memory and battery status information. You can tap on the gauges to toggle between numeric and percentage display. On Treo devices signal strength is also displayed in this area.

### **The Refresher**

Tap on this button to manually refresh the application area. Normally, refreshing happens automatically but some users prefer to use manual refresh mode for speed. If set to Manual via the "Menu | Options | Launcher X Preferences > App Refresh" setting it may be necessary to tap the Refresher icon after installing a new application. Setting to Manual will increase performance of Launcher X since it will not have to check every time it starts for any changes in applications installed in order to display their icons.

### **The Categories**

Applications are organized into separate categories. This area will differ depending on the skin you have installed. Use this area to navigate between categories. Categories are displayed in tabs inside the Classique series of skins. To choose a



different category, just tap on its tab. Note the Basique skin works without tabs, much the same way as the standard launcher.

### **The Applications**

This area displays the applications available on your handheld. Simply tap on an application to run it. You can organize applications into separate categories.

### **The Gadget Bar**

Gadgets are located on the Gadget Bar and provide actions such as turning on/off the backlight, turning off/locking the device, and displaying the Launcher X Browser file manager. You can also drag applications to appropriate gadgets to delete, beam, etc. Tapping the triangle at the lower right corner hides/displays the Gadget Bar.

## **Using Launcher X Basics**

### **Launching an Application**

Much like your standard launcher, simply tapping on an application icon will launch the application. You may need to switch categories to find the application you need.

Alternatively, if your handheld supports navigation hardware such as Jog Dials, a 5-way Navigator, or an add-on keyboard with arrow keys, you may optionally select between applications and then launch them. Navigating beyond the start or end of a category will automatically switch you to the previous or next category respectively.

Launcher X displays the physical location of an application by augmenting the application icon with a location indicator. An application can be resident in RAM, Flash RAM, Memory Card, or on some devices on a Springboard cartridge.

### **Organizing your Applications**

The beauty of Launcher X is its quick drag drop interface for organizing your applications. Simply drag applications between categories to reorganize them. Note that for the Basique skin, which does not have a tabular format, you will need to drag the application icon to the category selector at top right of the screen.

*Tip: An additional way to move applications between categories is to tap and hold on the application icon. A pop-up window with a list of categories will appear allowing you to select the destination category. Alternatively you can tap and drag an application to any other category tab that is visible to move it to that category.*

### **Adding and Arranging Categories**

Categories can be added or removed by using the "Edit Categories List" menu item. Within this area, you can organize the order the categories appear with to up and down arrows in the top right of this form.



## The Gadget Bar

The Gadget Bar is a very powerful and easy to use tool within Launcher X. It consists of a toolbar at the bottom of the screen on which a set of gadgets are placed. Each gadget can perform common task such as turning on your device's backlight or deleting an application. You can configure the gadget bar to hold your favorite most used gadgets. For information on how to specify which Gadgets are included see the [Gadget Bar section](#)



To perform an action on an application, drag the application onto a gadget. For example, to delete an application, drag it to the trashcan.

All gadgets can be tapped directly to perform tasks which are not directed at any particular application.

The Gadget Bar can be toggled into a down position to increase the application area by tapping the bottom right Gadget Bar toggle. In the down position, it will automatically pop upwards if an application is dragged downwards towards the bottom of the screen.

*Tip: Users of Treo 600/650/700P series devices can select a gadget without using a stylus by holding down blue "option-shift" key and moving left/right with the 5-way navigator, whilst still holding down the "option-shift" key, hitting the 5-way center button will activate the gadget. If an application has been selected, the equivalent action will be the same as a drag and drop operation otherwise the default action will be the same as tapping the gadget with the stylus.*



## The Gadgets



### Backlight

Tap on this gadget to toggle the backlight. This option works only on devices for which this operation makes sense. Some devices cannot turn off their backlight.



### Beam

Drag an application to this gadget to beam it to another device. Alternatively, tap on this gadget to get a list of all applications and databases to beam.



### Contrast

Tap on this gadget to invoke the contrast adjustment dialog. This option works only on grayscale devices where the contrast is software controllable.



### Off

Tap to turn off the device (okay, it's not rocket science).



### Tools

This handy gadget provides quick access to many common operations. Tap on this gadget to get access to some common system utilities such as HotSync®, Preferences or Security as well some internal Launcher X operations such as preferences, app refresh, or hide/unhide categories. You may drag an application to this gadget to delete it, beam it, or get some information about the application.



### Card Tools

Drag an application stored on a card to copy it or move it to RAM, or to create a shortcut in RAM. Tap on that gadget to start Launcher X file manager. You'll be able to copy, move, delete, and beam all files stored in RAM or on expansion memory cards. You'll be also able to create, rename or delete directories, and rename your card. For further information see the File Manager section. For more information see [the Shortcut Tabs section](#)



### Brightness

Tap on this gadget to invoke the brightness adjustment dialog. This option works only on color devices where the brightness is software controllable.



## The Gadgets, continued...



### **Rename**

Drag an application to this gadget if you want to modify the displayed name.



### **Information**

Drag an application to this gadget to get more information on it, such as file size, type, version, and much more. You can tap this gadget to get a list of all applications and databases to choose from. Once you have the information screen up you can modify some of the properties (database attributes) by checking the appropriate checkbox. For security reasons, only "launchable," "backup," "read-only," "open," "bundled" and "hidden" attributes for databases stored in RAM can be modified.



### **Trash**

Drag an application this gadget to delete it. For advanced users, you can also optionally choose to delete linked data such as associated databases and preferences. You can also tap this gadget to get a list of all databases on the handheld to delete.



### **Lock**

Tapping this gadget will lock your handheld.



### **Off & Lock**

Tap on this gadget to turn off and lock the device. The next time you turn on the device, you'll have to enter a valid password, so do not forget it, or you'll have to do a hard reset, thus erasing all your data. This option will work only if the password for your device is set.



### **Send**

By tapping the Send/email gadget you will be able to send applications or databases visible in Launcher X by dragging them to this gadget. On devices running OS 4.0 or better, some applications/OS components can register themselves as a transport scheme (such as Email, Bluetooth, MMS). By tapping on this gadget, you'll be presented with a list of files in RAM or the memory card which can be sent with this ("send") transport scheme.



## Customizing Launcher X

---

### Default Settings

When first installed Launcher X sets some default settings for various items. These may be changed by you to personalize in virtually any way that you wish. The default settings are:

- Category title font: Small bold
- Category title show: Both

### Categories

The appearance of each category can be customized. To edit the appearance of the current category use the "Edit This Category" menu item or simply tap and hold on the existing category tab (if this is available in your skin). Within this form you may configure a number of properties.

Note: Due to various ways in which the default launcher categories are coded it is not possible to import any category settings you may have set up prior to installing Launcher X. Luckily with Launcher X customizing them is a breeze and fun too!

#### Basic



- **Name**  
Configures the category name.
- **Icon**  
Each category can be assigned an icon for quick reference.
- **Icon View**  
This determines the display mode of the category, and on higher resolution devices, the size of the icons. You may select List or Icon mode. In list mode, the application title is placed beside the application icon, in Icon mode the application title is placed below a much larger application icon.
- **Columns**  
Configures the number of application columns.



## Categories, Continued...

- **Category type**

A category can be one of three types:

- **Standard**
- **Hidden**

Hidden categories can be hidden or revealed using the "Hide Marked Categories" and "Unhide All Categories" menu items.

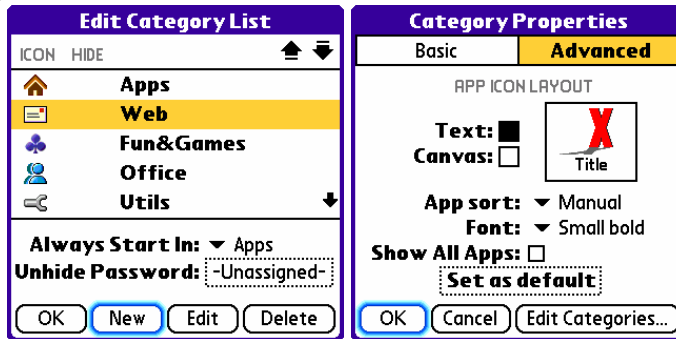
- **All**

Choose this option if you want all of your applications to be visible within this category. However note that applications inside hidden categories will not be displayed. Some versions of Launcher X has this control within the Advanced area.

- **Apply to All**

You can apply the properties of this category to all of your other categories using this button. Note that some versions of Launcher X has this feature under the Advanced area.

### Advanced



- **Always Start In\***

Specify which category you want to be displayed by default when starting Launcher X

- **App Sort\***

Applications can be sorted manually or alphabetically within a category. When set to manual you can simply drag an icon to whatever placement you want.

- **Font\***

Configures the font size.

- **Text\***

Configures the text color.

- **Canvas**

Configures the background canvas color of the category.

- **Set as default**

Applies the current settings. Highly recommended!

\*Feature unique to Launcher X that is not provided by the built in launcher!

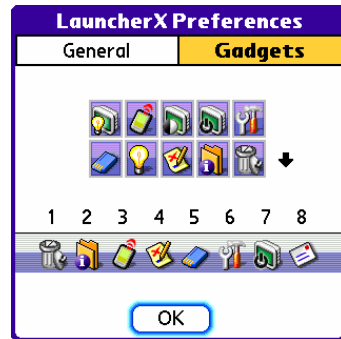
*Tip: The Up and Down arrows at the upper right of the "Edit Category List" screen allow you to change the order of your tabs.*

**NOTE:** Should you set a password for a category, hide it then forget the password it cannot be recovered. This is a security feature. The only way to regain access to application in that category is to uninstall Launcher X and then reinstall.



## The Gadget Bar

You can configure the Gadget Bar to hold your favorite, most used gadgets. This can be setup with the "Launcher X Prefs" menu item within the "Gadgets" section. Simply tap of the gadget you want to place on the Gadget Bar and select the corresponding position. To determine a gadgets use tap on it and it will display towards the top of the screen.



## Launcher X Preferences

Many of Launcher X's functional preferences can be modified under the "Launcher X prefs" menu item. Within this area under the "General" section are a number of far reaching options.

### Active Skin™

Launcher X comes with a number of skins, you can choose the skin you want to use in area. Note you can download and install more skins as they become available. See [www.gotreosoftware.com](http://www.gotreosoftware.com) for more information.

### App refresh

Specify the manner and frequency with which Launcher X will rebuild its icon list. There are three options: Automatic, Manual, and Ignore card:

- Automatic  
Refreshes icon list every time you access Launcher X.
- Manual  
Refreshes icon list only when you use the Refresh button.
- Ignore card  
Similar to Automatic, but ignores any memory expansion cards.

Please note that following each HotSync® operation, Launcher X will automatically re-scan both internal memory and any memory expansion cards that are present (regardless of the App refresh setting). This occurs a single time after every HotSync®.

### Hack Manager

If you want to see hacks in Launcher X, choose your favorite hack manager. If it is X-Master, then when you tap on a hack, X-Master will be started and it will display the detail screen for that hack. Other hack managers don't yet support this. If you don't want to see any hacks, choose "None" (the first option in the list of applications).



## Launcher X Preferences, continued...

### **DOC Reader**

Choose your favorite DOC reader if you want to see DOC books in Launcher X. If your reader supports "launchable databases" then when you tap on the DOC book, the reader will open it. If your favorite DOC reader is stored on the card, first create a shortcut for it.

### **Quickword, iSilo, and WordSmith**

Check any of these checkboxes if you wish to see the respective documents inside Launcher X's categories. You'll be able to open those databases by tapping on them.

### **Screen colors**

When Launcher X is started for the first time, it will set the screen to 256 colors mode on color handhelds, and 16 shades of gray on B&W handhelds. Available options depend on your handheld capabilities.

*Tip: 256 colors mode is usually faster than 65536 colors mode.*

### **Category title font**

Choose the font that will be used for displaying category titles. If you choose the Default option, Launcher X will use Standard Bold font for the current category title, and Standard font for other categories

### **Category title show**

This option controls what Launcher X will display in the category title. You can choose to see only category icon, only category title, or both. If the Default option is selected, Launcher X will display both category icon and the title for the current category, and only icon for other categories. If you did not assign an icon to a category, its title will be displayed instead of icon.

### **Memory card**

If you can use an expansion memory card in your handheld, you will be able to choose the directories that Launcher X will search for applications to be shown. The default directory is /Palm/Launcher/ and it cannot be edited nor deleted from the list. You can add up to 32 directories to the list



## Advanced Features

---

### The File Manager

Launcher X comes with the fully-featured file manager built into the Card Tools gadget. To start it, tap on the Card Tools  gadget.

- Use the pop-up trigger in the upper right corner of the screen to switch from expansion card to handheld internal memory (RAM).
- The left corner shows the free memory for the chosen storage.
- On the left side, below the free memory, is a checkbox you can use for selecting or deselecting all files in the current directory.
- On the right from that checkbox is a selector box with the current directory. Tap on it to get the "Select Directory" screen where you can (besides the obvious task to select directory) create, rename or delete directories.
- On the right side of the screen, right of the directory selector, is a selector box where you can choose what you would like to see in the right column of the file list. Three dashes ("---") means that nothing will be shown.

If you want to perform an action on multiple files, first select them by checking their checkboxes and then tap on the button for the action you want (move, copy or delete).

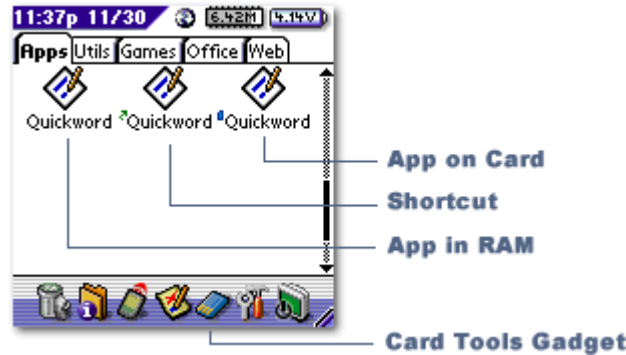
To do an operation with a single file, tap on it and you will get a list of possible actions. All except the last two options (open and send) are self-explanatory.

- The Open option will open the selected file with the application registered for that file type. If no application is registered for that file type, the OS will offer you to copy that file to the RAM.
- With the Send To... option you can send a file via any installed application or library registered for the \_send exchange manager scheme. For example, you can send a file via Bluetooth or e-mail.



## Shortcut Stubs

If an application is stored on the card, Launcher X can create in RAM a small (3 k) "stub" application that starts the main application, without any help from Launcher X. The name and the full path to the main application is embedded inside the shortcut, so it will stop working if you change, for example, the file name of the main application. A Shortcut has the same creator ID and the type of the main application. Applications that use Shortcuts have a small arrow to the left of the application name whereas applications on a card have a small card icon. See below for examples.



### How shortcuts can be used?

For apps synced with a desktop conduit (such as SplashID), and apps which you would like to assign to a hardware button or view with a hack like PopUp Favorites or AppHack, you must create a "shortcut" if you decide to store the app on Card. This is a simple two-step process:

1. Drag the icon of an app to the Card tools gadget icon, and select "Move to card".
2. Drag the icon of the app a second time to the Card tools gadget icon, and select "create shortcut". This insures that the desktop, the button manager and hacks all recognize the fact that the app is now stored on Card.

### Deleting Shortcuts

The easiest way to delete a shortcut is to tap on the Trash can gadget to get a list of applications. Shortcuts will be displayed at the beginning of the list and they can be easily recognized by the first character in their name – it's always "«".



## Bundled Apps for better use of the Memory Card

---

Applications on your handheld are often linked to one or more other files (databases). For example, your address book will consist of one application database, and a multitude of storage databases which contain your address book contacts.

Launcher X supports what is known as "bundling" which provides a means to link (bundle) multiple files from the same application together (files of the same Creator ID). This means when you move an application to the memory card, all of its associated databases will be moved with it. Likewise, when that application is run from the memory card, all of the associated databases will be moved into RAM and any runtime changes on them will be re-copied back onto the card. End result - you can migrate all of an application's components onto the memory card, freeing up more of your handheld's RAM.

Note that you may notice an increase in the amount of time it takes for an application to start that is located on removable memory such as an SD card. This is not a fault of Launcher X as it is due to external memory cannot execute as quickly as the internal RAM.

### **How do I bundle an application?**

All databases have a "bundled" attribute; you can check this out by dragging an application onto the Info Gadget. You'll see a checkbox named "bundled", also take note of the Creator ID in the "CrID" field that uniquely identifies this application. To link the associated databases simply tap the Info Gadget and search out all of the databases that have the same Creator ID and set their "bundled" attribute. Make sure the databases are in RAM before attempting to set the "bundled" attribute. This operation is not possible on a file located on the memory card.

Once the bundled attribute has been set, Launcher X will treat these separate application components as a bundled group for memory card operations including running apps on the memory card.



## End User Support

Supports for issues not addressed in this document are available via the following primary means:

- Web based support at [www.gotreoftware.com](http://www.gotreoftware.com) and [www.launcherx.com](http://www.launcherx.com)  
These sites contain constantly updated support and FAQ sections and should be your first avenue for additional information.
- Email to [support@gotreoftware.com](mailto:support@gotreoftware.com)  
When emailing us please include the name the order was placed under as well as the device you have installed Launcher X on.

There is also an excellent end user supported online forum at [www.launcherxplanet.com](http://www.launcherxplanet.com) which contains a wealth of information. Note that This is not an official Get Mobile Solutions board, but we encourage you to check out this friendly and helpful forum.



## LEGAL NOTICES

---

### Software Upgrade Policy

From time to time we will release improved versions of the Launcher X product. Major version upgrades, defined as a whole version point increment, such as from version 1.x to version 2.x will NOT BE FREE. Users who purchase Launcher X within 30 days of a major upgrade will be entitled to a free upgrade. Typically we will offer time limited discounts for major upgrades to past customers. Communication of any special offers will be communicated via email to the email address submitted when the order was placed or subsequently updated with us.

Minor releases, which are defined as a decimal point increment, such as from version 1.0 to 1.1 or 1.2.1 to 1.2.2 will be free. Minor releases may contain bug-fixes and incremental feature improvements.

To check the version number installed press the Menu button on your Palm device then choose Help | About. This will display an image similar to the one below. To check the latest version at anytime go to <http://www.gotreesoftware.com/>



*Tip: Users of devices enabled with internet access/web browsing on their devices can check to see if they have the latest version installed via Launcher X. Press the Menu button on your handheld and then choose Help | Check for New Version.*



*This will cause Launcher X to check the GoTreoSoftware.com site to see if you have the latest version installed or not. If it detects that there is a new version available you will even be able to install it directly to your device!*



## Refund Policy

All software may be downloaded as a free trial from its web site. We encourage all users to thoroughly trial the product before purchasing. Due to trial versions being available we DO NOT OFFER REFUNDS.

## Privacy Statement

We respect your right to privacy and will never under any circumstances sell or otherwise pass on your name and e-mail information to a third party without your prior consent. Note that during the ordering process it may be necessary for certain information to be communicated to our payment processor in the normal course of business.

- **What information do we collect?**

When you purchase software, we collect personal information to allow us to fulfill your order and provide technical support services. Information we collect may include your name, address, telephone number, and email address. We do not keep credit card information on file.

- **What do we do with this information?**

Only Get Mobile Solutions, Inc. and its exclusive marketer, GoTreoSoftware.com have access to customer's information. We will not give or sell your private information to any outside company for any purpose without your express consent.

We will use the information provided to us to notify you of important announcements regarding special offers or software upgrades. If you do not want to receive this information, you can be excluded from these announcements by notifying us by email.

## Privacy Statement, continued...

### **Review and Correction of Personal Information**

At any time, you may review or correct your personal information in your user profile. You may also request that we remove your registration data and personal information our system; however, we reserve the right to provide free technical support and software upgrades only to registered users.

### **Security of Information**

We will take reasonable precautions to protect your personal information from loss, misuse, unauthorized access, disclosure, unauthorized alteration, destruction or other malfeasance.

### **Further Information for Citizens of the European Union (EU)**

The EU has adopted a privacy directive substantially regulating the privacy rights of citizens of the countries of the European Union.



## Acceptable Use

---

Copyright © 2002 - 2006 Get Mobile Solutions, Inc. All rights reserved.

Two (2) copies of this documentation may be printed per installation of Launcher X as a reference document to using Launcher X. In addition, two (2) copies of this documentation may be made for archival and backup purposes. Except for the foregoing, no part of this documentation may be reproduced or transmitted in any form or by any means or used to make any derivative work (such as translation, transformation or adaptation) without express written consent from Get Mobile Solutions, Inc.

Get Mobile Solutions, Inc. reserves the right to revise this documentation and to make changes in content from time to time without obligation on the part of Get Mobile Solutions, Inc. to provide notification of such revision or changes.

GET MOBILE SOLUTIONS, INC. AND ITS SUPPLIERS MAKE NO REPRESENTATIONS OR WARRANTIES THAT THE DOCUMENTATION IS FREE OF ERRORS. THE DOCUMENTATION IS PROVIDED ON AN "AS IS" BASIS. GET MOBILE SOLUTIONS, INC. AND ITS SUPPLIERS MAKE NO WARRANTIES, TERMS OR CONDITIONS, EXPRESS OR IMPLIED, EITHER IN FACT OR BY OPERATION OF LAW, STATUTORY OR OTHERWISE, INCLUDING WARRANTIES, TERMS, OR CONDITIONS OF MERCHANTABILITY, FITNESS FOR A PARTICULAR PURPOSE, AND SATISFACTORY QUALITY. TO THE FULL EXTENT ALLOWED BY LAW, GET MOBILE SOLUTIONS ALSO EXCLUDES FOR ITSELF AND ITS SUPPLIERS ANY LIABILITY, WHETHER BASED IN CONTRACT OR TORT (INCLUDING NEGLIGENCE), FOR DIRECT, INCIDENTAL, CONSEQUENTIAL, INDIRECT, SPECIAL, OR PUNITIVE DAMAGES OF ANY KIND, OR FOR LOSS OF REVENUE OR PROFITS, LOSS OF BUSINESS, LOSS OF INFORMATION OR DATA, OR OTHER FINANCIAL LOSS ARISING OUT OF OR IN CONNECTION WITH THIS DOCUMENTATION, EVEN IF GET MOBILE SOLUTIONS, INC. OR ITS SUPPLIERS HAVE BEEN ADVISED OF THE POSSIBILITY OF SUCH DAMAGES.



## End User License Agreement

---

**IMPORTANT-READ CAREFULLY:** This End-User License Agreement ("EULA") is a legal agreement between you ("Licensee", either an individual or a single entity) and GoTreo Software, Inc. ("Licensor") for the software accompanying this EULA, which includes computer software and may include associated media, printed materials, and "online" or electronic documentation (the "Product"). The SOFTWARE referenced by this EULA is all software sold by and distributed by GoTreo Software, Inc.

By exercising your rights to make and use copies of the SOFTWARE, you agree to be bound by the terms of this EULA. If you do not agree to the terms of this EULA, you may not use the SOFTWARE.

### 1. LICENSE TO USE.

Licensor grants Licensee a non-exclusive, non-transferable license (the "License") for the use of Licensor's software in machine-readable form, registration code, and accompanying documentation (the "Product") on Licensee's machine for which Licensee pay the license fee. The software shall not be used by more than one person per license purchased. The term of this license shall be one (1) year from the purchase date.

### 2. RESTRICTIONS

Product is copyrighted and contains proprietary information and trade secrets belonging to Licensor and/or its licensors. Title to Product and all copies thereof is retained by Licensor and/or its licensors. Licensee will not use Product for any purpose other than for Licensee's own purposes or make copies of the software, other than a single copy of the software in machine-readable format for back-up or archival purposes. Licensee may make copies of the associated documentation for Licensee's use only. Licensee shall ensure that all proprietary rights notices on Product are reproduced and applied to any copies. Licensee may not modify, decompile, disassemble, decrypt, extract, or otherwise reverse engineer Product, or create derivative works based upon all or part of Product. Licensee may not transfer, lease, assign, make available for timesharing or sublicense Product, in whole or in part. No right, title or interest to any trademarks, service marks or trade names of Licensor or its licensors is granted by this Agreement.

### 3. LIMITED WARRANTY

Licensor warrants, for a period of fifteen (15) days from the purchase date, that Product will perform in substantial compliance with the written materials accompanying Product on that hardware and operating system software for which it was designed, as stated in the documentation. Use of Product with hardware and/or operating system software other than that for which it was designed voids this warranty. All other refund requests for Product will not be extended if Product offers a free trial period. Licensor warrants that Product, as delivered to Licensee, does not infringe any existing U.S. patent, copyright, trademark, or trade secret. If Licensee promptly notify Licensor of any such claim, Licensor will indemnify Licensee and hold Licensee harmless against such claim, and will control any defense or settlement, unless Licensee have modified Product, combined Product with any software that led to the claim or failed to promptly install any version of Product provided to Licensee that is non-infringing. If commercially reasonable, Licensor will either obtain the right for Licensee to use Product or will modify Product to make it non-infringing, and failing these options, will refund Licensee's License fee less accumulated depreciation calculated on a straight line method over a useful life of one (1) year. Provided the computers and operating systems on which Licensee has installed Product are Year 2000 compliant, Licensor warrants that Product will recognize the year 2000 as valid. In the event Product does not function according to



## End User License Agreement, continued...

published specifications because of the failure to recognize the year 2000 as valid, Licensor will provide the necessary resources to remedy year 2000 problems in Licensor's Product which prevent Product from functioning in accordance with its published specifications. The remedies above are Licensee's exclusive remedies for Licensor's breach of any warranty contained herein.

### 4. LIMITATION OF REMEDIES

THE FOREGOING WARRANTIES ARE IN LIEU OF OTHER WARRANTIES, EXPRESS OR IMPLIED, INCLUDING, BUT NOT LIMITED TO, THE IMPLIED WARRANTIES OF MERCHANTABILITY AND FITNESS FOR A PARTICULAR PURPOSE WITH RESPECT TO THE PRODUCT. SOME STATES DO NOT ALLOW SUCH DISCLAIMERS OF WARRANTIES, SO SOME OR ALL OF THE DISCLAIMER ABOVE MAY NOT APPLY TO LICENSEE. IN NO EVENT WILL LICENSOR OR ITS AUTHORIZED REPRESENTATIVES BE LIABLE TO LICENSEE FOR ANY CLAIMS OR DAMAGES IN EXCESS OF AMOUNTS PAID BY LICENSEE TO LICENSOR OR ITS REPRESENTATIVES UNDER THIS LICENSE. LICENSOR SHALL NOT BE LIABLE FOR ANY LOST DATA, LOST PROFITS, LOST SAVINGS, DEVICE FAILURE, HEARING DAMAGE OR ANY SPECIAL, PUNITIVE, INCIDENTAL OR CONSEQUENTIAL DAMAGES ARISING OUT OF LICENSEE'S USE OF OR INABILITY TO USE THE PRODUCT, EVEN IF LICENSOR OR ITS AUTHORIZED REPRESENTATIVES HAVE BEEN ADVISED OF THE POSSIBILITY OF SUCH DAMAGES. LICENSOR AND ITS AUTHORIZED REPRESENTATIVES WILL NOT BE LIABLE FOR ANY SUCH CLAIM BY ANY OTHER PARTY.

### 5. CONFIDENTIALITY

Licensee agree that Product is confidential property of the Licensor ("Proprietary Information"). Licensee will not use or disclose any Proprietary Information except to the extent Licensee can document that any such Proprietary Information is in the public domain and generally available for use and disclosure by the general public without any charge or license. Use by persons to which Licensee have contracted any of Licensee's data processing services is permitted only if each contractor (and its associated employees) is subject to a valid written agreement prohibiting the reproduction or disclosure to third parties of software products and associated documentation to which they have access and such prohibitions apply to the Product. Licensee recognize and agree that there is no adequate remedy at law for a breach of this Section, that such a breach would irreparably harm the Licensor and that the Licensor is entitled to equitable relief (including, without limitation, injunctive relief) with respect to any such breach or potential breach, in addition to any other remedies available at law.

### 6. EXPORT REGULATION

Licensee agree to comply strictly with all US export control laws, including the US Export Administration Act and its associated regulations and acknowledge Licensee's responsibility to, if necessary, obtain licenses to export, re-export or import Product. Product is prohibited for export or re-export to Cuba, North Korea, Iran, Iraq, Libya, Syria and Sudan or to any person or entity on the U.S. Department of Commerce Denied Persons List or on the U.S. Department of Treasury's lists of Specially Designated Nationals, Specially Designated Narcotics Traffickers or Specially Designated Terrorists.

### 7. US GOVERNMENT RESTRICTED RIGHTS

If Licensee are licensing Product or its accompanying documentation on behalf of the US Government, it is classified as "Commercial Computer Product" and "Commercial Computer Documentation" developed at private expense, contains confidential information and trade secrets of Licensor and its licensors, and is



## End User License Agreement, continued...

subject to "Restricted Rights" as that term is defined in the Federal Acquisition Regulations ("FARs").  
Contractor/Manufacturer is: GoTreo Software, Inc..

### 8. UPGRADES AND SUPPORT

Licensor shall provide upgrades for the major version purchased at no charge when and if available.  
Licensor shall also provide e-mail support to Licensee.

### 9. MISCELLANEOUS

This Agreement is made under the laws of the State of Illinois, USA, excluding the choice of law and conflict of law provisions. This Agreement is the entire Agreement between Licensee and Licensor relating to Product and: (i) supersedes all prior or contemporaneous oral or written communications, proposals, and representations with respect to its subject matter; and (ii) prevails over any conflicting or additional terms of any quote, order, acknowledgment, or similar communication between the parties during the term of this Agreement. If any provision of this Agreement is held invalid, all other provisions shall remain valid unless such validity would frustrate the purpose of this Agreement, and this License shall be enforced to the full extent allowable under applicable law. No modification to this License is binding, unless in writing and signed by a duly authorized representative of each party. The License granted hereunder shall terminate upon expiration of the term or Licensee's breach of any term herein and Licensee shall cease use of and destroy all copies of Product. Duties of confidentiality, indemnification and the limitation of liability shall survive termination or expiration of this Agreement. Any future purchases of Product shall also be subject to this Agreement. All shipments are FOB GoTreo Software, Inc. All of Licensor's licensors and subsidiaries are direct and intended third-party beneficiaries of this Agreement and may enforce it against Licensee.

### 10. TRADEMARKS

All GoTreo Software product names are trademarks of GoTreo Software, Inc. All other marks are property of their respective owners.

### 11. CONTACT

Should you have any questions concerning this EULA, or if you desire to contact Licensor for any reason, please write or e-mail GoTreo Software, Inc. at [support@GoTreoSoftware.com](mailto:support@GoTreoSoftware.com).